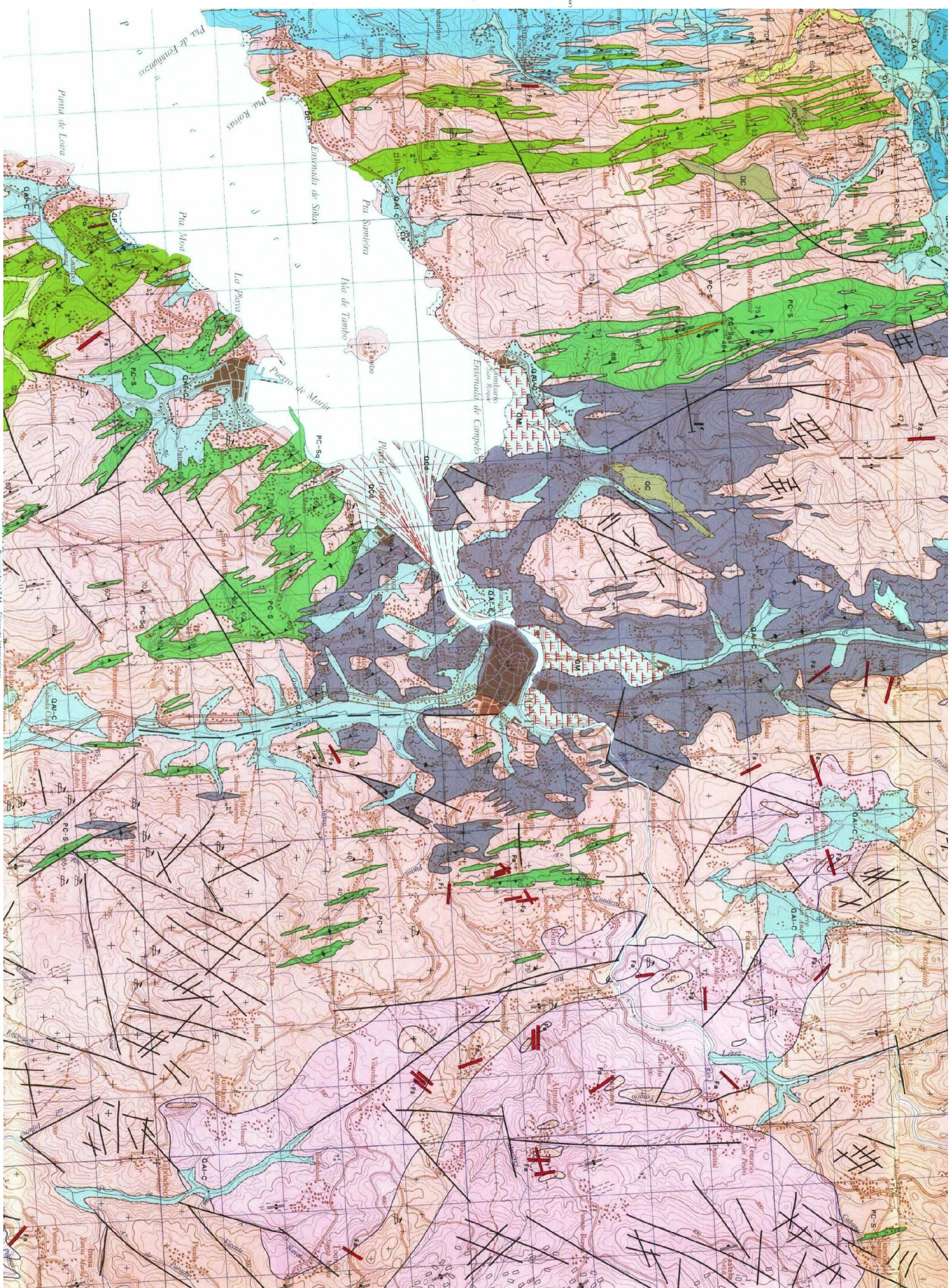
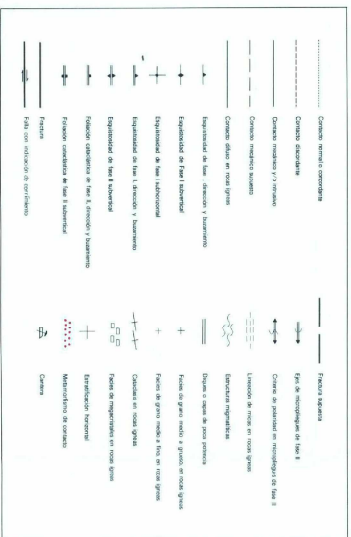
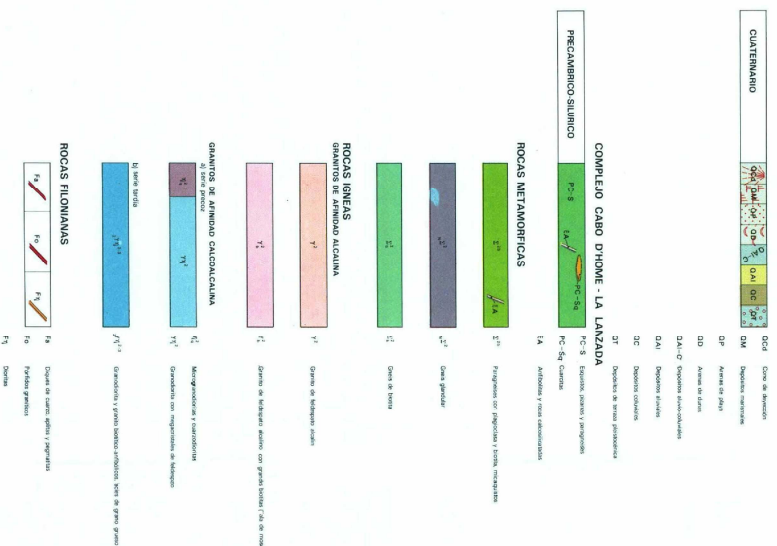


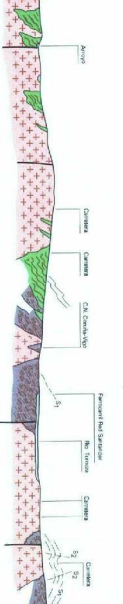
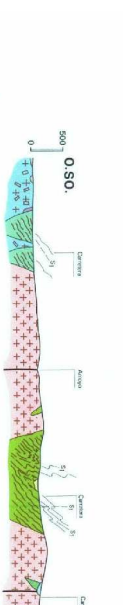
LEYENDA



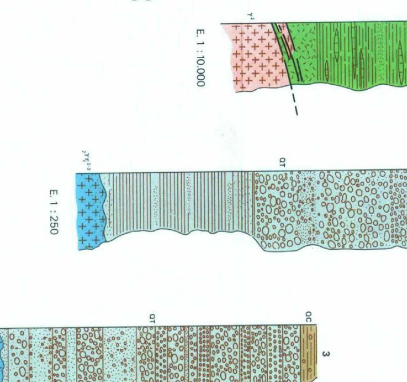
SIGNOS CONVENCIONALES

COMPOSICION QUIMICA DE LAS PRINCIPALES FORMACIONES

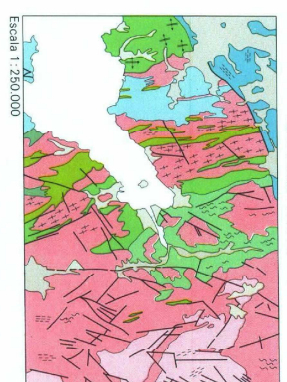
FACIES	R. METAMORFICAS				R. IGNEAS			
	1	2	3	4	1	2	3	4
Md de materia	4	1	2	3	1	2	3	4
Si O ₂	46.65	46.85	46.47	50.42	77.69	73.21	72.24	73.11
Ti O ₂	0.27	0.25	1.29	0.28	0.26	0.25	0.25	0.27
Al ₂ O ₃	14.65	14.75	14.75	14.98	14.91	14.98	14.82	14.91
Fe ₂ O ₃	5.42	5.24	6.47	10.76	13.24	12.82	12.82	12.82
Mn O	0.24	0.21	0.48	0.26	0.24	0.21	0.21	0.21
Mg O	12.31	12.29	9.28	4.26	12.31	12.29	12.29	12.29
Ca O	0.24	0.21	0.24	0.24	0.24	0.24	0.24	0.24
Na ₂ O	0.24	0.21	0.24	0.24	0.24	0.24	0.24	0.24
K ₂ O	0.24	0.21	0.24	0.24	0.24	0.24	0.24	0.24
H ₂ O	0.24	0.21	0.24	0.24	0.24	0.24	0.24	0.24
M.V.	0.24	0.21	0.24	0.24	0.24	0.24	0.24	0.24



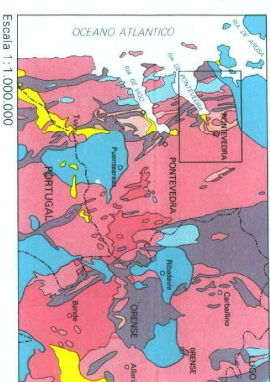
CORTES GEOLOGICOS



ESQUEMA TECTONICO



ESQUEMA REGIONAL



COLUMNAS ESTRATIGRAFICAS EN LAS PRINCIPALES UNIDADES O ZONAS

